

OPERATION AND MAINTENANCE MANUAL

LOCATION: **SITE ADDRESS**
CAR PARK ROOF LEVELS AND RAMPS

CAR PARK DECK WATERPROOFING WEARING SURFACE

SECTION C1:

DESIGN CRITERIA

- C1.1 Description of System
- C1.2 Design Brief/Criteria/Assumptions
- C1.3 Provision for Future Modification
- C1.4 Repair, alteration and demolition
 - i) Safety Hazards
 - ii) Health Hazards
 - iii) Environmental Hazards

SECTION C2:

RESIDUAL HAZARD

- C2.1 Details of significant hazards that remain
- C2.2 Details of hazardous materials and substances that remain

SECTION C3:

COMMISSIONING AND HANDOVER

- C3.1 Specification of System and materials supplied
- C3.2 Record drawings
- C3.3 Testing and Commissioning Data
- C3.4 Names and Addresses of manufacturers/applicators
- C3.5 Specialist Manufacturers literature

SECTION C4:

OPERATION ISSUES

- C4.1 Operation and Control
- C4.2 Fault Finding and Trouble Shooting
- C4.3 Cleaning

SECTION C5:

PLANNED MAINTENANCE

- C5.1 Routine Maintenance Procedures and Schedules
- C5.2 Recommended spares

SYSTEM INFORMATION

SECTION C1: DESIGN CRITERIA

C1.1: DESCRIPTION OF SYSTEM

Waterproofing wearing surface to roof levels and access ramps.

C1.2: DESIGN BRIEF/CRITERIA/ASSUMPTIONS

The waterproofing driving surface has a design life in excess of ten years. This is covered by the contractor's installation warranty and manufacturer's products warranty for the period of ten years.

The deckmaster System R has a design life in excess of ten years. The requirement for maintenance will occur when Spillage/dirt or debris needs to be cleaned off the surface or the finishes are mechanically damaged.

C1.3: PROVISION FOR FUTURE MODIFICATION

Contact: **Deckmaster Ltd**
Pumaflor House
Ainleys Industrial Estate
Elland West Yorkshire HX5 9JP
Tel: 01422 379131
email: info@deckmaster.co.uk

C1.4: REPAIR, ALTERATION AND DEMOLITION

See items C1.2 and C1.3

Repair

Should damage occur, repair would normally involve thorough cleaning of the damaged area and its surrounding areas. Cutting the damaged deckmaster System R back to a clean well bonded edge and reinstating the deckmaster System R as the original specification and lapping onto the surrounding area.

Alteration

No alteration without notice to Deckmaster Ltd and carried out by Deckmaster Ltd licensed applicators.

Demolition

The cured system is inert and should be treated as non hazardous waste.

SECTION C2: RESIDUAL HAZARD

C2.1: DETAILS OF SIGNIFICANT HAZARDS THAT REMAIN

Item	Hazard/Risk	Area(s) Affected	Cross Ref.
	None		
Outline of Required Further Controls/Critical Health and Safety Design Assumptions			
Item	Hazard/Risk	Area(s) Affected	Cross Ref.
Outline of Required Further Controls/Critical Health and Safety Design Assumptions			

SECTION C2.2: DETAILS OF HAZARDOUS MATERIALS AND SUBSTANCES THAT REMAIN

Item	Hazard/Risk	Area(s) Affected	Cross Ref.
	None		
Outline of Required Further Controls/Critical Health and Safety Design Assumptions			
Item	Hazard/Risk	Area(s) Affected	Cross Ref.
Outline of Required Further Controls/Critical Health and Safety Design Assumptions			

SECTION C3: COMMISSIONING AND HANDOVER

C3.1: SPECIFICATION OF SYSTEM AND MATERIALS SUPPLIED

The following provides a schedule of materials used/supplied and a copy of the as-built material specification for the system.

Deckmaster System R Waterproofing Wearing System Documents

Technical Product Data Sheet:

Deckmaster System R DPM	Part A	20091
Deckmaster System R DPM	Part B	20091
Deckmaster System R Membrane	Part A	20092
Deckmaster System R Membrane	Part B	20092
Deckmaster System R UVR Finish	Part A	20093
Deckmaster System R UVR Finish	Part B	20093

COSHH Material Safety Data Sheets:

Deckmaster System R DPM	Part A	20091a
Deckmaster System R DPM	Part B	20091b
Deckmaster System R Membrane	Part A	20092a

Deckmaster System R Membrane
Deckmaster System R UVR Finish
Deckmaster System R UVR Finish

Part B
Part A
Part B

20092b
20093a
20093b

C3.2: RECORD DRAWINGS

None issued at present

C3.3: TESTING AND COMMISSIONING DATA

All work is carried out under the supervision of **Contractor** site management.

Site testing includes:

Moisture levels in concrete

Application weather conditions; temperature/dew point

See Site Quality Control Process images.



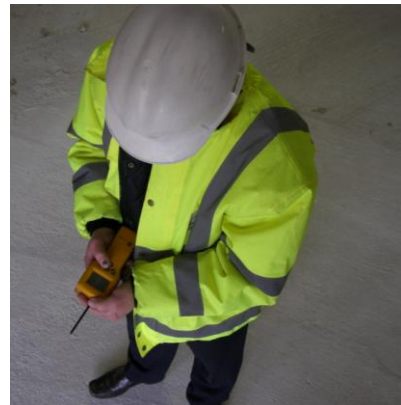
<97% RH using a Hygrometer



Concrete temperature +5°C and rising



**BS 8204: Part 3
The pull off should be >1.5 N/mm²**



Air temperature 3° above the dew point

C3.4: NAMES AND ADDRESSES OF MANUFACTURER/APPLICATOR

Manufacturer **Deckmaster Ltd**
Pumaflor House
Ainleys Industrial Estate
Elland West Yorkshire HX5 9JP
Tel: 01422 379131
email: info@deckmaster.co.uk

Applicator: **Contractor**
Road
City
County
Post Code
Tel:
Fax:

C3.5: SPECIALIST MANUFACTURER'S LITERATURE

The following list of Specialist Manufacturer's literature has been compiled during the project.

See item C3.1

Deckmaster System R Waterproofing Wearing System Documents

Technical Product Data Sheet:

Deckmaster System R DPM	Part A	20091
Deckmaster System R DPM	Part B	20091
Deckmaster System R Membrane	Part A	20092
Deckmaster System R Membrane	Part B	20092
Deckmaster System R UVR Finish	Part A	20093
Deckmaster System R UVR Finish	Part B	20093

COSHH Material Safety Data Sheets:

Deckmaster System R DPM	Part A	20091a
Deckmaster System R DPM	Part B	20091b
Deckmaster System R Membrane	Part A	20092a
Deckmaster System R Membrane	Part B	20092b
Deckmaster System R UVR Finish	Part A	20093a
Deckmaster System R UVR Finish	Part B	20093b

SECTION C4: OPERATION ISSUES

C4.1: OPERATION AND CONTROL

There are no abnormal operation or control requirements for the driving surface.

C4.2: FAULTFINDING AND TROUBLE SHOOTING

There are no faultfinding or trouble shooting tips for the driving surface, other than periodic visual inspections and the annual joint warranty inspections.

C4.3: CLEANING

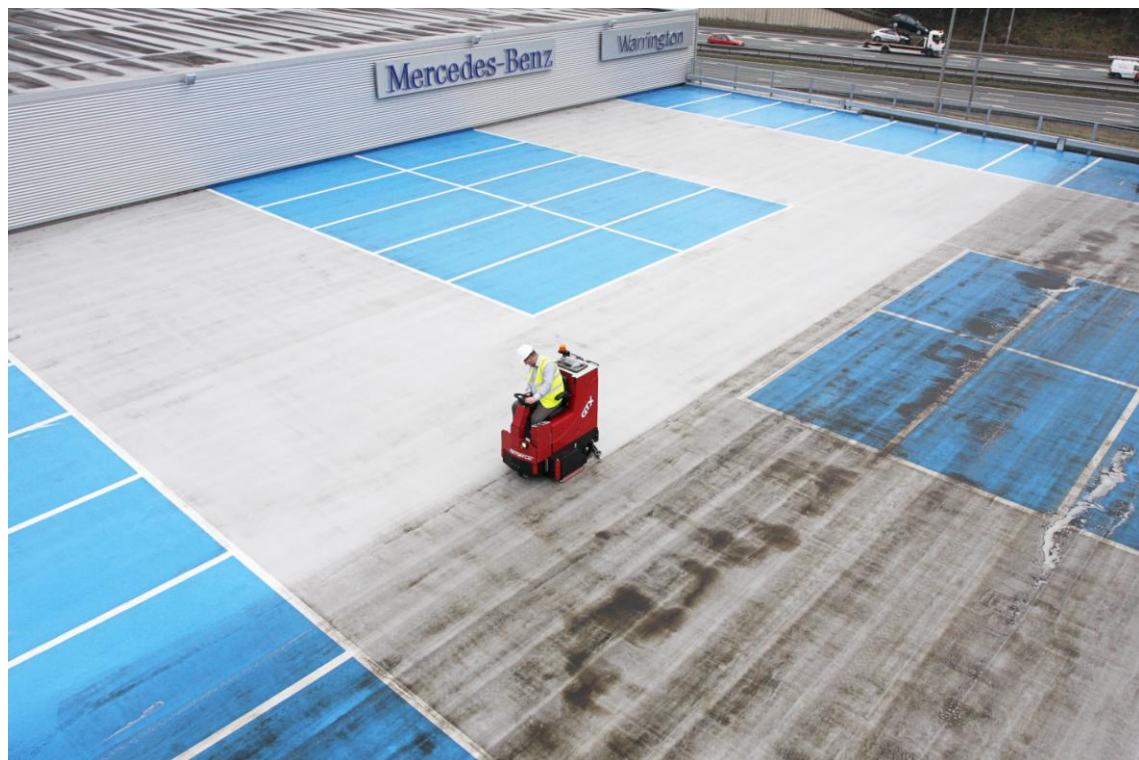
Before any wet process cleaning is carried out a period of seven days should be allowed after installation. Any new build projects with hand over or initial clean requirements should make this allowance.

Surfaces should be then cleaned at regular intervals and maintained in accordance with BSEN1504-10

Frequency of cleaning will depend on the level of use of the car park. The client should focus on spillages and loose debris causing potential slip hazards and abrasion to the surface.

It is recommended to use an alkaline low foaming detergent ensuring the detergent is mixed with water following the supplier's dilution rates.

The warranty as provided is void if the detergent solution is at a concentration above 10% in water or if the detergent solution is outside the acceptable ph tolerance of ph6 – ph11.



Mercedes Benz cleaning video link

https://youtube.googleapis.com/v/gZg74L_gKPc%26hl=en_US%26fs=1%26

SECTION C5: PLANNED MAINTENANCE

C5.1: ROUTINE MAINTENANCE PROCEDURES AND SCHEDULES

The surfaces need to be visually inspected periodically and cleaned of any spillages or debris. Any damage is to be reported immediately in line with the warranty requirements.

Any frozen surfaces will require to be dealt with using a de-icing medium to prevent a slip hazard. Solid sodium formate is recommended as it does not leave staining on the deck coating surface.

See example Safegrip SF Product and MSDS sheets

C5.2: RECOMMENDED SPARES LIST

As the System's products have a shelf life of twelve months, it is recommended that no spares be kept, for information on any repair or alteration works please contact:

Deckmaster Ltd
Pumaflor House
Ainleys Industrial Estate
Elland West Yorkshire HX5 9JP
Tel: 01422 379131
email: info@deckmaster.co.uk